

## So you want PT Cruiser Spyder Bullet Caps?

*How about Center Caps for your original factory wheels ...  
made from the original factory plastic hub caps.*

# *Here's how!*

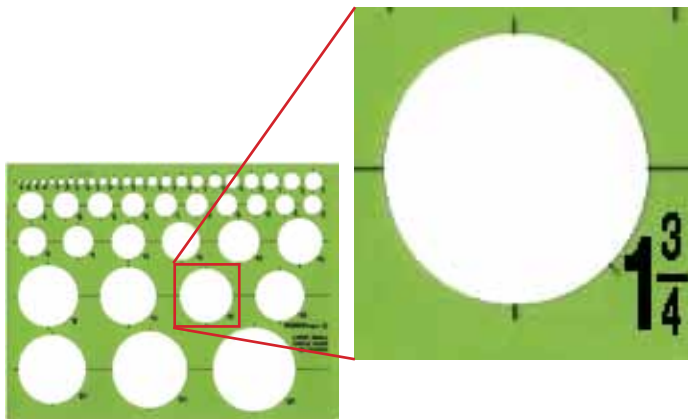


**A** lot of people have been searching for “Spyder (Spider) Bullet” center caps for their PT Cruiser. **ME TOO.**

The problem is the 5 on 4” lug pattern. Nothing is made aftermarket so I decided to make my own out of the stock plastic silver hub cap from 15” factory wheels. The following pages will show you in detail the steps I took to get this look. The cost was about ten bucks but the time was about five or six hours as I had to design as I went along. To experiment with I started with a junk yard bought hub cap. *Note, I am not affiliated with any company or product mentioned, such as, ebay, O'Reily or the chrome edge trim maker.*

**T**his is what you will need:

- ~ Your four hub caps (practice hub cap optional)
- ~ Four **1-5/8" ACORN** chain link fence post caps  
They have a 1-13/16" outer diameter.
- ~ Some chrome door edge trim, 1/4", "U-shaped" (got mine from O'Reilly Auto Parts)
- ~ Eight sheet metal screws #8-1/2" long,
- ~ Sabre saw with fine tooth metal cutting blade
- ~ Dremel tool with a sanding sleeve or a rounded/flat metal file
- ~ Drill with 1/8" & 1/4" bits and a 1-3/4" or 1-13/16" hole saw blade
- ~ A measuring device - circle guide to find the center of the hubcap
- ~ A compass with a fine point marker taped to it to draw the outer cutting edge diameter.



**1 5/8" Chain Link Fence Aluminum Post Cap NEW**

Item condition: **New**

Quantity:  More than 12 available

Price: **US \$1.38**

[Buy another](#)

[Add to cart](#)

Best Offer: [Make Offer](#)

[Add to Wish list](#) [Add to Watch list](#)

**Save** You'll earn **\$0.03** in eBay Bucks. [See conditions](#)

**Save** **McLater** **\$5 back & 6 mos to pay on 1st purchase**  
Subject to credit approval. [See terms.](#)

Shipping: **\$2.50** Standard Shipping [See more services](#) | [See all details](#)

[Add to Watch list](#)

**Seller Info**  
**fencemanufacturer** (5778)   
99.2% Positive feedback

[Save this seller](#)  
[See other items](#)

Visit store: Vinyl PVC Metal Fence Manufacturer

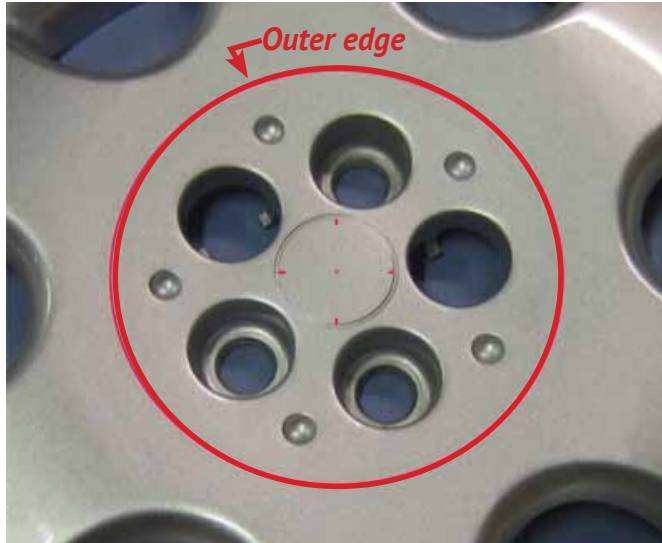
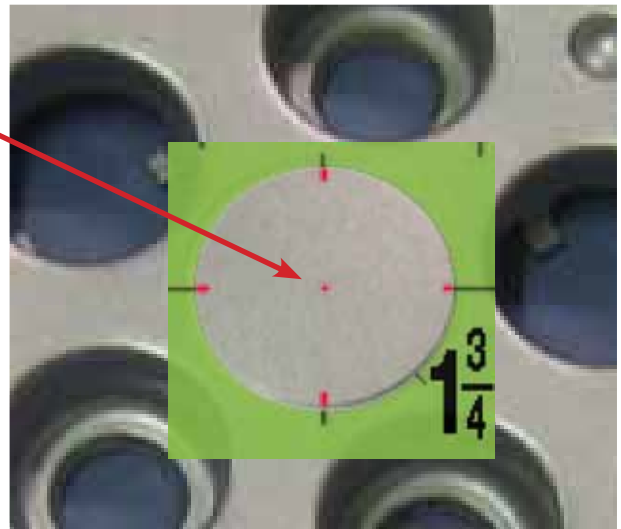
**Other Item Info**

Item number: 22007990306  
Item location: Richmond Hill, New York, United States  
Ships to: Worldwide  
Payments: PayPal, Bill Me Later, Visa/MasterCard, Discover  
[See details](#)  
History: 21 sold

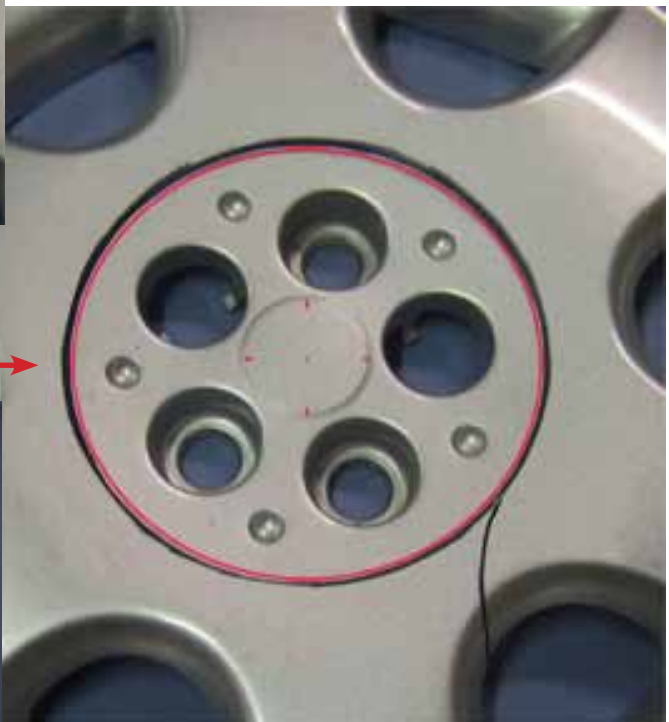
# F

ind the center of the hubcap.

Draw the **outer diameter edge**, 7-13/16" as your cutting guide using the compass with marker taped on. Cut outside of the marker line then sand off the edge up to the maker line so you end up with the correct 7-13/16" diameter.



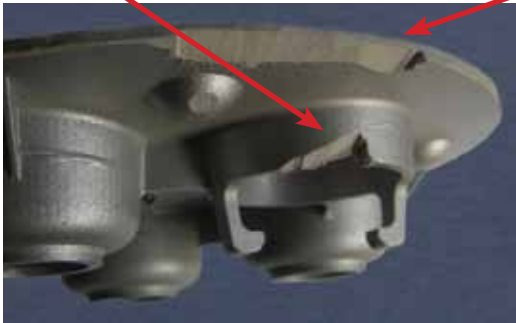
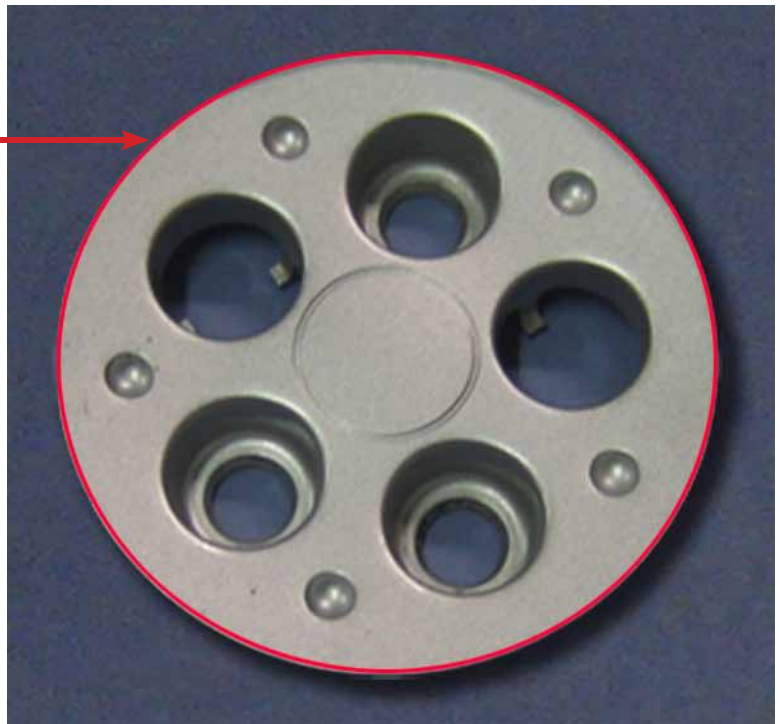
**T**his is the result of the outer cut.



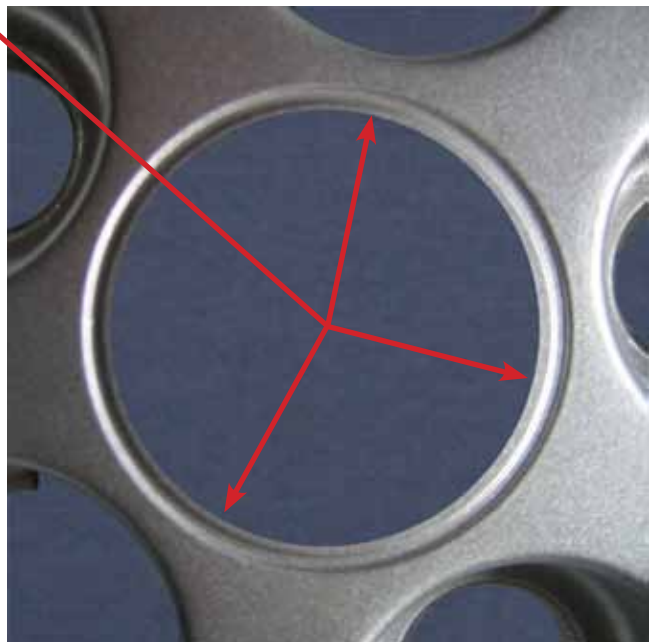
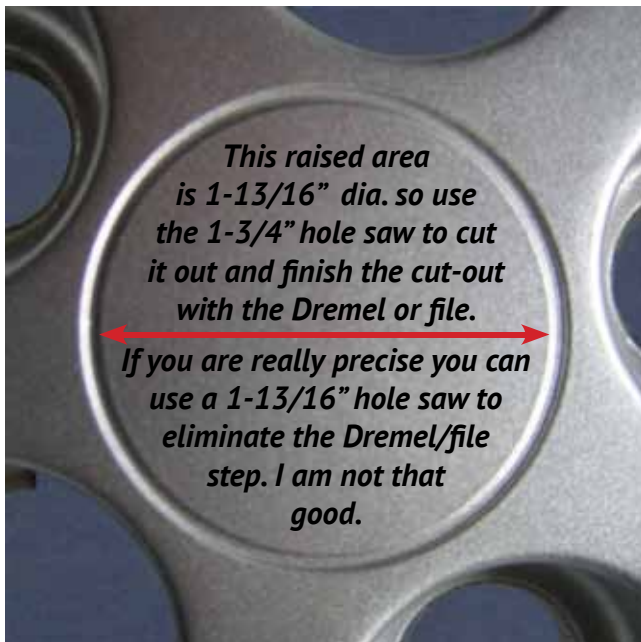
**Sand UP TO** the edge of the marker line. The edge will be covered by the chrome edge trim.



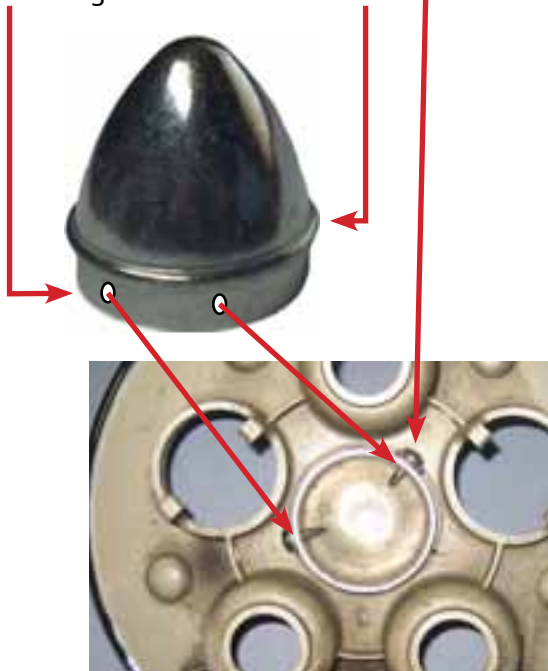
**D**o not worry about the red edge as it will be covered by the plastic chrome edge trim. However, I suggest you bevel the backside edge to half the thickness to make it easier to attach the edge trim. I used a bench grinder but a Dremel would work too. Be careful not to grind into the lug hole area as I did on my test center.



**N**ow you rough cut out the center with the 1-3/4" hole saw then with the Dremel or rounded flat file finish the hole to 1-13/16". This happens to be the exact size as the raised area in the middle of the hub cap. **This** is the little left over material to be filed away.



**I**nset the acorn in the hub cap center hole and mark the acorn where you need to drill two holes for the sheet metal screws (see pic) then remove the acorn and drill the 2 holes between the acorn edge and the raised rim of the acorn for the #8 sheet metal screws to secure the acorn.



**Y**ou will need to drill access holes for the screwdriver to set the sheet metal screws in the acorn.

**F**inish the cap with the plastic chrome edge trim and polished aluminum acorn. The edge trim needs to be cut at a slight angle on both ends where they meet because the outer diameter of the trim is slightly larger than the inner diameter. The angle is guess work.



**F**inally finished and mounted on the wheels of my 2001 Taupe Frost Metallic Limited Edition PT.

